

MEDIENINFORMATION

EFFECTIVE IN FORM AND LIGHT

Ettlin presents its innovative strength in lighting design in an effective and functional way at the Euroshop 2020. Ettlin Lux, a brand of the Ettlin group, demonstrates the various fields of application with its patented textiles and luminaires, frame systems and effect mirrors.

In regards to the numerous applications in the public and private interior design sector, Ettlin highlights its latest product innovations at the Euroshop from the 16th to the 20th of February.

The highlights are the fabulous luminaire series consisting of the floor and pendant lamps. Individual and customized frame system for wall or ceiling applications, also having an acoustic function, are just a few more highlights of the Ettlin Lux product line.

The products of Ettlin Lux are easy to integrate and provide a unique light effect. The custom-made lighting textiles open up the possibility to apply the company's products as room-designing elements with functional properties – including the 3D effect mirror, the sound-absorbing textile wall and ceiling elements.

Effect mirrors for interior design

The vision of creating a functional product, also having a visual value, has resulted in an unique product consisting of four components: frame, LEDs, textile and mirror glass. This translucent mirror is applied in a variety of applications such as health spas, hotels, airports, offices, entrance areas and in the retail sector.

Frame systems for wall and ceiling installations with an acoustic function

Interior and product designers and engineers create innovative concepts with aesthetic and function, resulting in pre-installed frame systems for wall and ceiling installations. These frame systems are equipped with the Ettlin Lux textile which have

Den vollständigen Presstext inklusive druckfähigen Fotos finden Sie unter folgendem Link:

<https://ettlinlux.com/presse-lounge>

Ihre Ansprechpartnerin für die Presse:
Jasmina Hrustanovic (Marketing) in Kooperation mit
bering*kopal, Büro für Kommunikation, Reinbeckstr. 40
70565 Stuttgart

T +49 7243 290 264 oder +49 711 745 17 59 - 15
info@ettlinlux.com oder heike.bering@bering-kopal.de

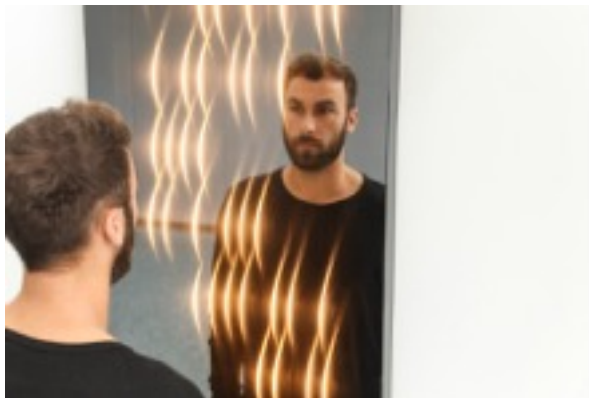
a sound-absorbing function and can also be combined with an additional acoustic material. Due to these two combined functions, this acoustic frame system can perfectly be used in conference rooms or other interior design projects.

Pendant and floor lamps for ambient lighting

The Matrix and Magma luminaire series create a perfect and decorative light for private and public use. Architects and designers make use of our unique lighting fabric, especially for indirect concepts, by achieving a pleasant room atmosphere in hotels, bars, restaurants and office areas worldwide. The depth effect within the lampshade creates a real eye-catcher. The ring lights can be individualised in shape and colour, and thanks to energy-saving LED technology, it is a sustainable lighting element.

Cylindric luminaire made of glass and textile with accent lighting

The cylindric light Magma with its glass body combines accent and ambient lighting in one pendant lamp. The installed LEDs and the lighting fabric hidden within the glass body create the unique depth effect – a very elegant luminaire. The cylindric light of the Magma series is mainly used indoor and can be designed variably in colour and lighting effect. The integrated downlight also produces accentuated light, being dimmable and controlled via Casambi and DALI.



A functional product with an additional, visual value: with its three-dimensional lighting structures the mirror gets a special eye catcher. By turning the LEDs off, the translucent mirror becomes a usual mirror. Photo: ETTLIN



The sound absorbing material on the back of the wall frames is an affordable way to soundproof the walls and to create a lighting effect at the same time. Photo: Nikolay Kazakov



In 2019, the Matrix Ring Light with the Ettlin Lux special textile won the Red Dot Design Award in the Lighting Design category. With variable 3D light effects and different diameters it is used as an interior element for ambient lighting. Photo: Peters Leuchten



Through soundproofing material on the back, aluminium clamping frames become a sound-absorbing system which are used in office design, hotels, clubs, lobbies, wellness and lounge areas. Photo: Nikolay Kazakov



Light frames for an entrance area arranged with CI colours: this image shows a wall system with wide-effect, embedded into a wooden frame, measuring 5000 x 1000 mm and with the textile Miracle clamped into it. Photo: Nikolay Kazakov



The MATRIX Ring Light in an entrance area: this pendant light- one meter in diameter - can be adapted to the colour and brightness of the room. (DALI) Photo: Nikolay Kazakov



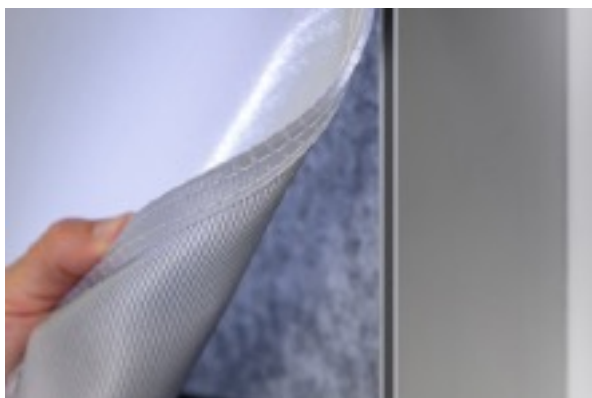
MAGMA Cylindric Light combines accentuated and ambient lightning: with its height of 65 cm, 6 centimeters in diameter and designed with the ETTLIN Decolux black textile, the lights are controlled by Casambi and Bluetooth. Photo: Nikolay Kazakov



Hidden in the rings (40 cm in diameter) of the textile floor lamp, the LEDs are equipped with an energy performance of 20 watt and a temperature colour of 2400 kelvin. Photo: Linus Lintner

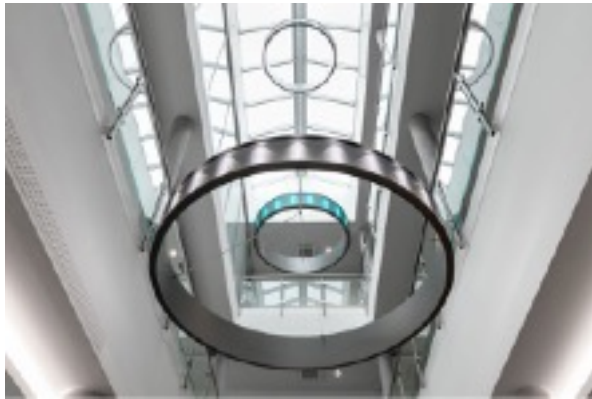


The textile Miracle is embedded into a clamping frame with 6 cm depth and a standard piping system to provide a three-dimensional light effect. Photo: Nikolay Kazakov



10. Schallabsorbierendes Akustikvlies auf der Rückplatte der Rahmensysteme sorgen für eine optimale Raumakustik und sind zugleich raumgestaltendes Element für Offices, Hotels, Lobbies, Wellness-Areas.

Sound- absorbing material on the back of the frame system provide an optimal acoustics, and in the same time, they act as a room-designing element for offices, hotels, lobbies, wellness and lounge spaces. Photo: Nikolay Kazakov



The Matrix ring lights, hanging at a height of 12 m, light up the new headquarter of E.G.O. in Oberderdingen with CI colours. Photo: Nikolay Kazakov



With 1000 mm in diameter, each ring of the dimmable Matrix Ring lights shines in 42 watt and a light colour of 2400 Kelvin. Photo: Linus Lintner