

PRESS RELEASE

Heike Bering, your press contact

T +49(0)711 7451 759-15 · heike.bering@bering-kopal.de

HARMONIOUS INTEGRATION INTO OLD INDUSTRIAL ARCHITECTURE

4a Architekten installed the versatile Lighting Pad in their new offices – it fits in with the flair of the old industrial architecture and improves the atmosphere in the rooms.



The Nimbus Lighting Pad presents exhibits and working areas in a brilliant light and provides acoustic shielding. Standing under the lighting-acoustics islands feels like being in a separate room. The Lighting Pad was recently installed at 4a Architekten in Stuttgart.

Photo: Frank Ockert

When it comes to fitting out their own premises, design specialists like 4a Architekten often opt for integrated lighting-acoustics solutions like the one offered by the Nimbus Lighting Pad. Daring to try something new in new premises is a sign of both innovative and experimental ambition. At the same time, the Lighting Pad, the latest new development from Nimbus and Rossoacoustic, impresses with its high quality and proven effectiveness.

The open-plan office of 4a Architekten from Stuttgart is located on the first floor of a former industrial building. It comprises two office wings with two conference rooms and two kitchenettes. During refurbishment, a large spatial element was removed, the floor-space was opened up and new furniture was added. "That's why we were on the lookout for a solution that created ideal working conditions in terms of lighting, and whose design fitted in with the flair of the old building," explains company director Matthias Burkart. The firm also wanted a solution that created an acoustically pleasant working environment.

THE LIGHTING PAD FITS IN HARMONIOUSLY WITH THE EXISTING ARCHITECTURE

Round and square Nimbus Lighting Pads are now suspended from the ceilings of the architectural firm's offices. The formally sedate, geometric elements are not only acoustically effective but also create pleasantly glare-free, warm, even brilliant lighting at the workplace. The Lighting Pads convinced the architects due to their variable usage options and the perfect combination of design, lighting technology and acoustics.

"Due to the large number of individual elements, we opted for white Nimbus Pads. Their clear-cut geometric shapes and the discrete colours create an additional spatial element that fits in well with the existing architecture," says Burkart. Acoustic Pads only were used in the rear office wing, where they were joined by linear Nimbus Modul L suspended luminaires and Roxxane Office LED desk luminaires – the latter in particular are regarded as design icons and were recently the subject of an extensive product relaunch at Nimbus.

PROVEN IN PRACTICE

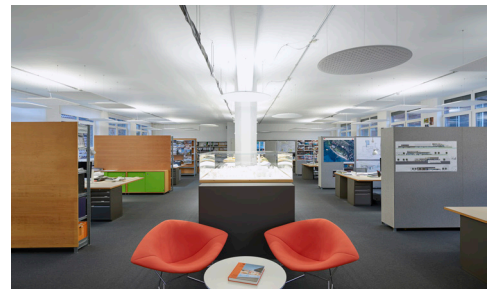
The interaction between lighting solution and acoustic element in one really appeals to our architects," says Burkart, who adds: "The wide-ranging freedom in terms of design always leads to lively discussions about other ways in which the elements could have been arranged." The employees expressed their satisfaction with the result of the redesign. As the architect commented: "There were already one or two Nimbus fans among our staff – and now the number has certainly grown!"

Stuttgart, August 2019

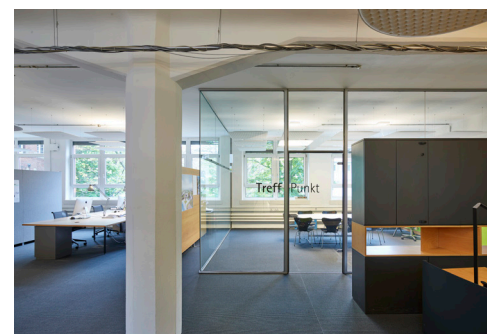
Reprint free of charge / File copy requested



View into the newly refurbished architectural office of 4a Architekten. The Nimbus/Rossoacoustic Lighting Pads and Acoustic Pads suspended from the ceiling fit in perfectly with the charm of the old industrial architecture and create a pleasant atmosphere in the rooms. The indirect lighting effect also contributes to the rooms' charisma. Photo: Frank Ockert



All elements – from the Lighting Pads through to the Acoustic Pads – have been kept in white. Visually discreet, they provide a carefully planned, integrated lighting solution that provides a pleasant environment for working in an open space. Photo: Frank Ockert



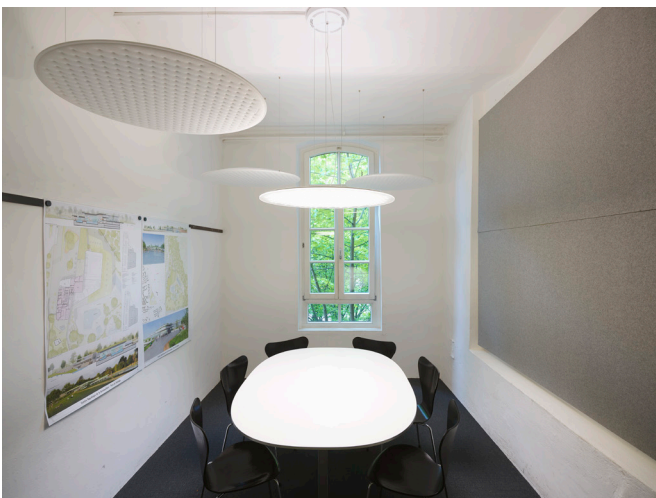
Cables casually entwined around the power supply line in no way detract from the overall impression made by the Nimbus/Rossoacoustic Lighting and Acoustic Pads, which were used throughout the whole storey occupied by 4a Architekten. The symmetrical suspension at one height is in keeping with the sedate geometric shapes. Photo: Frank Ockert



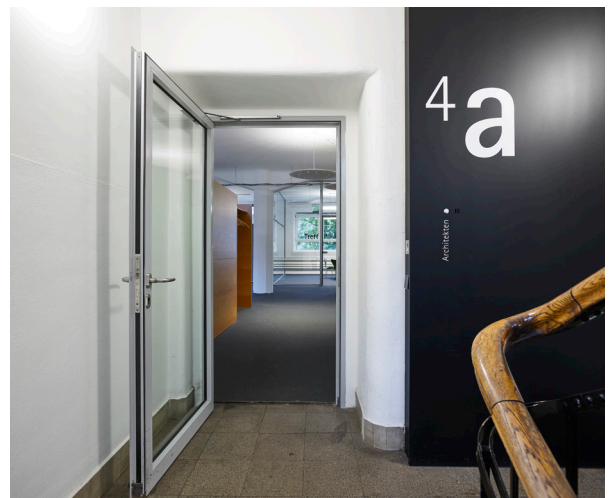
The open room concept calls for practical island solutions and well-conceived acoustic planning. The Nimbus/Rossoacoustic Lighting Pads and Acoustic Pads suspended from the ceiling meet these demands.
Photo: Frank Ockert



Each perspective reveals a new tableau on the ceiling. Both the Lighting Pads and the Acoustic Pads from Nimbus/Rossoacoustic convinced the architects due to factors such as their variable usage options and the perfect combination of design, lighting technology and acoustics. Photo: Frank Ockert



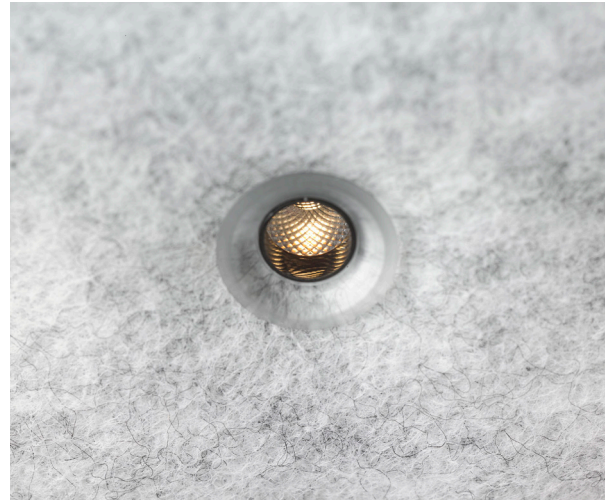
A Lighting Pad can also be found above the middle of the table in a conference room at 4a Architekten with Acoustic Pads grouped around it suspended at different heights. The light is absolutely glare-free, warm and even brilliant, and the Lighting Pad is also acoustically effective.
Photo: Frank Ockert



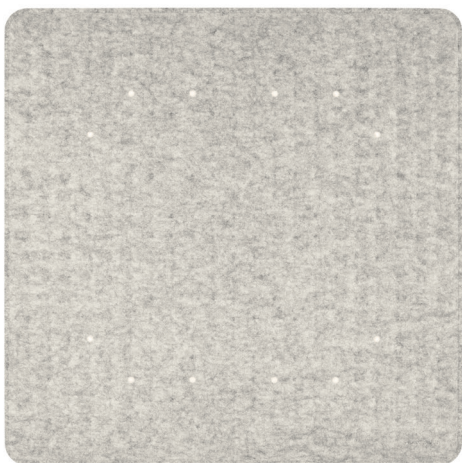
The Lighting Pad attracts attention as soon as one enters the premises. It was the architects' choice because it blends in harmoniously with the existing architecture and lends the rooms a surprising, experimental touch. Nimbus/Rossoacoustic's long-standing expertise guarantees quality and inspires confidence.
Photo: Frank Ockert



Characteristic interplay between light and surface: LEDs are integrated in the soft embossing of the acoustic fleece at specified distances. Hardly perceptible with the human eye, they surprise with their brilliant light quality. Photo: Frank Ockert



The high-performance LED (diameter 8 mm) is hardly perceptible at first glance yet displays precision and a high quality of detail. Photo: Frank Ockert



Creates an acoustically pleasant environment and emits a brilliant, warm light: the Nimbus Group's new Lighting Pad. High-performance LEDs, almost invisible at first glance, are integrated into the acoustic fleece. Photo: Frank Ockert



The Lighting Pad Q 900 in detail. The sides are 910 mm long, the height 60 mm. Barely perceptible, high-performance LEDs have been recessed into the fleece made of high-quality polyester. Photo: Frank Ockert



The Nimbus/Rossoacoustic Acoustic Pads create an acoustically pleasant atmosphere. They are available in various colours, shapes and sizes.
Photo: Frank Ockert



The Acoustic Pads from Nimbus/Rossoacoustic impress due to factors such as their variable usage options and the perfect combination of design, lighting technology and acoustic effect.
Photo: Frank Ockert



Nimbus/Rossoacoustic Acoustic Pads have distinctive soft embossing. This design feature creates a formal proximity to Nimbus LED luminaires.
Photo: Frank Ockert



Nimbus/Rossoacoustic Acoustic PADS are also available in PLUS versions (sound absorption class A). They can be suspended from the ceiling or mounted vertically with no trouble at all.
Photo: Frank Ockert

PRESS RELEASE

Heike Bering, your press contact

T +49(0)711 7451 759-15 · heike.bering@bering-kopal.de

ABOUT NIMBUS

An architecture brand and innovative products for the design of the home and workplace – that is Nimbus. In February 2019, Häfele acquired one hundred percent of the enterprise. Nimbus founder Dietrich Brennenstuhl will remain active in the management of the company at its present location in Stuttgart and will continue to be responsible for innovations, development and design of the product portfolio. Besides high-quality LED lighting systems and battery-powered, cableless luminaires, Nimbus also provides modular, acoustically-effective partitioning and shading systems.

"Light Meets Acoustics" is the claim coined by Nimbus to describe its extensive product range and its holistic approaches, which are realised in both private residences and in the project business.

www.nimbus-group.com

Stuttgart, August 2019

Reprint free of charge / File copy requested